



HOME SERIES

NFT Hydroponics Leafy Greens System, 5 Shelf

Instruction Manual

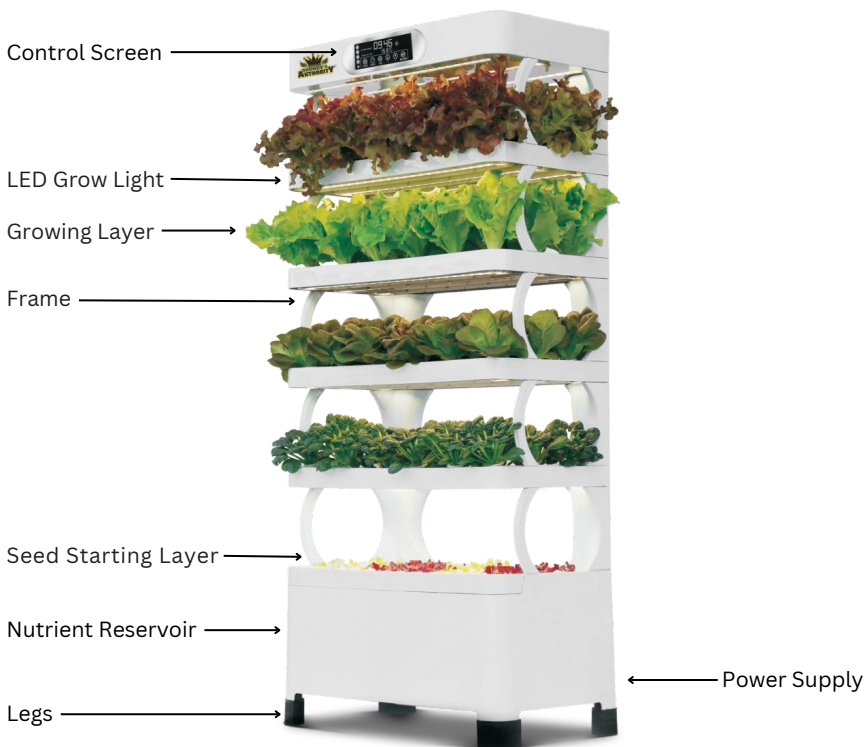




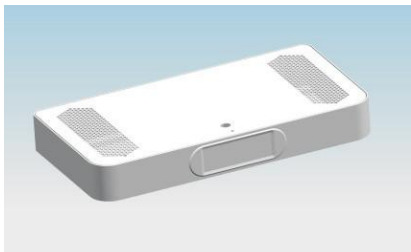
PACKING LIST

Thank you for your support!

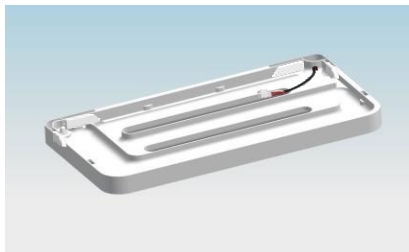
- This product is a complete hydroponic system intended for leafy greens (smaller sized plants).
- **Please read the instruction manual carefully before installation and follow all the assembly steps.**
- Please operate this system according to the procedures set forth in this manual.
- If any problems arise with this system, please unplug the power cord immediately and contact your local dealer.



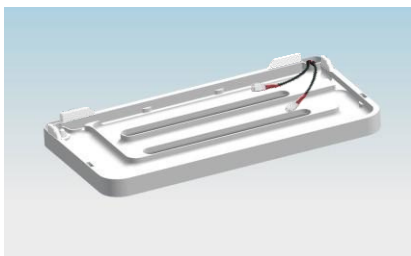
Total Unit Size: 30.3" x 15.8" x 67"



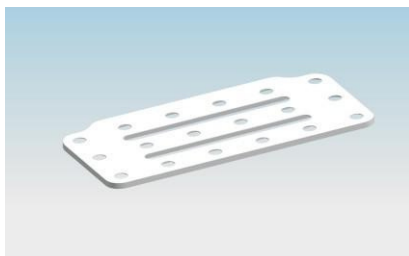
(1) Intelligent Control Layer



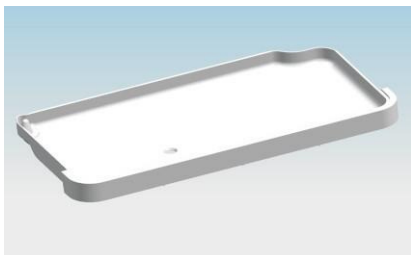
(3) Planting Layer Single Plug



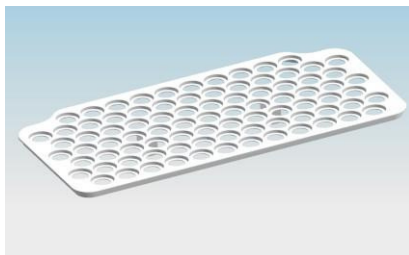
(1) Planting Layer Double Plug



(4) Planting Layer Cover



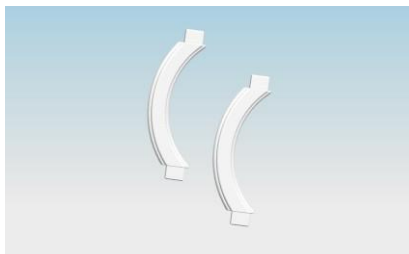
(1) Seedling Layer Tray



(1) Seedling Layer Cover



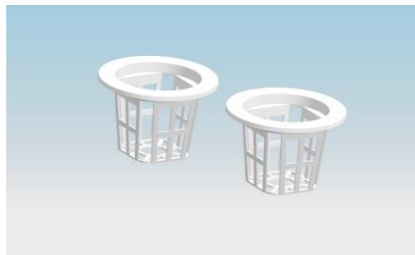
(1) Nutrient Reservoir



(10) Circular Column



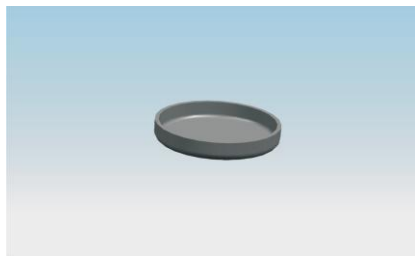
PACKING LIST



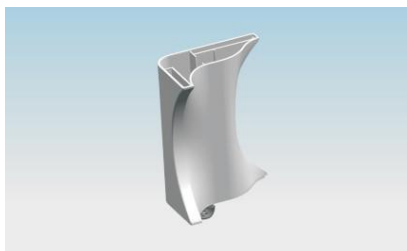
(160) 1.5" Net Cup



(1) Spray Bottle



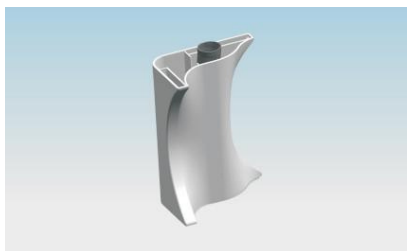
(10) Net Cup Light Cover



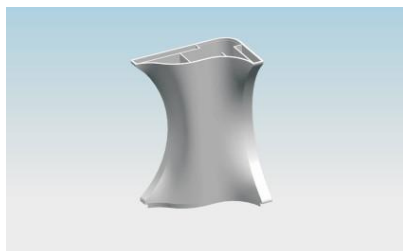
(1) Top Water Pipe Column



(3) Water Pipe Column



(1) Bottom Water Pipe Column



(5) Threading Column (1X5)



(2) Water Pipe Bending Card

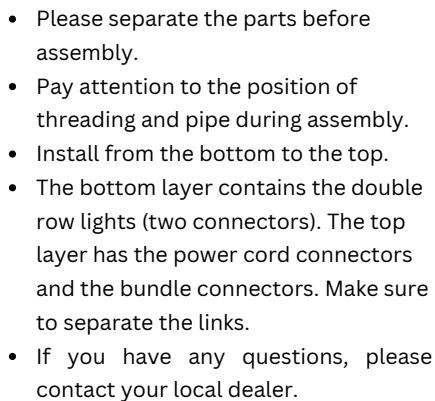


(4) Legs



(1) Nursery Layer Pipe

Tip: Please note the structural difference and installation position of the pipe's column pieces. Please be sure to install the parts in the proper order.



1. Nutrient Reservoir
2. Legs
3. Bottom Water Pipe Column
4. Threading Column
5. Circular Column
6. Planting Layer Double Plug
7. Water Pipe Column
8. Planting Layer Single Plug
9. Top Water Pipe Column
10. Intelligent Control Layer
11. Nursery Layer Cover
12. Seedling Layer Tray
13. Planting Layer Cover
14. Wire Connection

Step 1. Tank Base Preparation

Take the water tank and install the legs. Fix the liquid level switch (floating ball upwards) and install the water pump. With the connecting pieces, we suggest you gently use a rubber mallet to make sure it is tight. Be sure to pay attention to the correct direction of the connecting piece (the oblique side is facing outward).

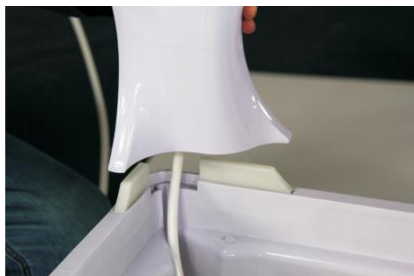


Tip: Please take notice of the direction of leg installation.



Step 2. Layer-By-Layer Assembly and Plug-In Wire Connectors

The connector for the intelligent control layer and the planting layer are pre-installed, and the connecting piece should be in the correct direction (the beveled side is facing outward). The connecting piece can be installed in place with a gentle tap from a rubber mallet.



The upper water pipe slides into the slot.



Pull the line through the column.

(continued)



Assemble from the bottom upwards according to the general structure diagram, starting with the base water tank. Assemble each layer being sure that the white water pipe in the corner column inserts into the previous white water pipe.



On the opposite corner, thread the power line through the hole in the corner column making sure each lamp wire plug is connected and the planting layer is sequentially installed. Note that the lamp wire connection plug is located above the column. Plug in the light wire connector.



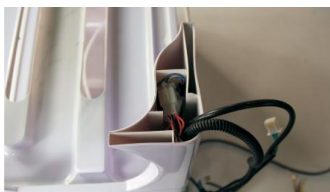
Before installing the top intelligent control layer, use the upper pipe bending card to clamp the white water pipe according to the position of the marking line (see photo).

The cable tie is then tightly clamped and placed in the column water pipe (see photo).



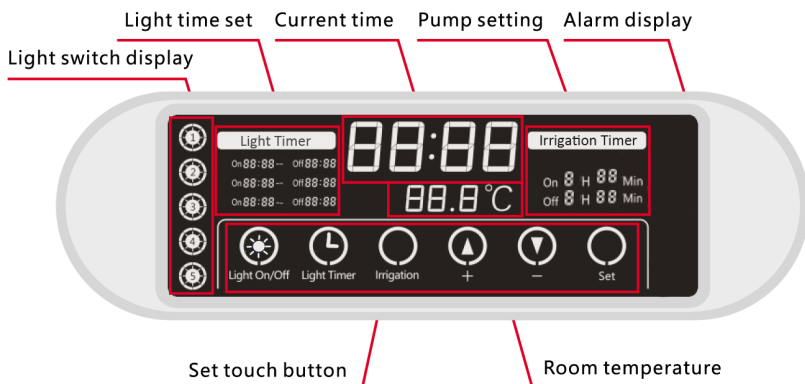
The lamp wire, the power cable and the wire harness should be inserted into the top of the column. Install the top intelligent control layer.

Place connector into the column.



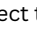
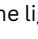


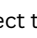
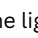


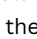
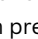



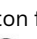
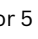
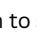




Finally, place the seedling tray, seedling cover, and planting covers onto the unit. The assembly is now complete.

Display Panel Function Layout:



Functional Operation:

1. Power on, then press the mode  button to start the machine. It will automatically enter default operating if there is no special order.
2. Press the  button to select the light level (1 to 5). Press   button to turn the light on or light off, then press  button to save your setting.
3. Press the  button to select the lights on/off timer. Press the   button to adjust, 3 settings can be set, then press  to save the setting.
4. Press the  button and hold for 5 seconds to enter the current time. Press   to change the setting, then press  to save.
5. Press the  button to select the water pump. There are 3 options: on, off and automatic. Press the  button for 5 seconds to enter the water pump automatic time set mode. Press the   button to set. Then press the  button to save.
6. Press the  button for 5 seconds to shut down the machine. Press the  button for 5 seconds to turn down the sound of the machine.
7. When the device runs abnormally, the corresponding icon on the alarm display area will flash.

Preparation

1. After opening the box, please check whether all parts and accessory items are present according to the packing list. If there is anything missing, please contact your local dealer.

2. Place the assembled hydroponic system in a suitable position in the room (flat even ground) and tear off the protective film on the light bar.

3. Take out the seedling layer and the seedling layer cover, add tap water to the water tank up to the 40L water line. Add any nutrient solution you wish to use into the water and mix well.

4. Plug in the power cord, turn on the power switch of the machine, and touch the start button of the display to turn on the machine. The planting lights are initially turned off.



Planting

1. Place your seed starter plug into the net cup.

2. Place the vegetable seeds into the seed starter plug. Generally, the seed starter plug is planted with 1-2 seeds. Individual varieties such as arugula may need 2-3 seeds. Follow the planting instructions for each individual seed variety.

Tip: Soaking the seeds in water for 12-24 hours is good for accelerating seed germination and effectively increasing the germination rate.



3. Place the net cup into the seedling layer of the hydroponic system to start the seedlings. Pay attention to observe the germination time of different varieties in different environments. Covering with the plastic wrap after sowing is conducive to seed germination. After germination, it can be removed. The daily light ON time should be no less than 8 hours.

(continued)

5. When the seedlings have grown for approximately 15-20 days (about 4-5 leaves), move the seedlings together with the net cup to a higher layer. Pay attention to the tender roots of the seedlings when transplanting. Ensuring that care is given to not rip or disturb them. The nursery layer can be continuously raised as needed.



Harvest

The vegetables grown in the planting layer can be harvested for 15-20 days. Remove the net pot from the planting layer, then remove the plant from the pot, cut off the roots of the vegetables and wash.

Maintenance

1. After the vegetables are removed from the net cup, the net cup can be used repeatedly after being cleaned.
2. If there is a free hole in the nursery layer or the planting layer, please use a blackout light cover to prevent the growth of green algae.
3. The water tank needs to be cleaned from time to time. To clean, turn off the power first then remove each layer cover (can be removed with the net cups). Use a soft rag starting from the top layer and wipe down each layer. Add water to rinse it more thoroughly. Prepare new water and nutrient solution after cleaning.



FREQUENTLY ASKED QUESTIONS

Does the light use much power?

The light source used in the machine is a special light source specially developed for vegetable growth, which has the characteristics of high brightness and low energy consumption. The rated power of the light source is 220W, and the lighting time can be freely adjusted. The power consumption is less than 1.8 KW per day for 8 hours of usage.

What is the difference between ordinary lighting and these vegetable growing lights?

Our LED vegetable growing lights are full-spectrum (like sunlight), which can provide the most suitable growth environment for vegetables. Ordinary lighting has little effect on vegetable growth.

How long does it take from seed to harvest?

Generally, the vegetable growth cycle is 30-50 days. Environmental conditions such as temperature and light will affect that.

Can it grow healthy green vegetables during the cold winter?

Of course, this hydroponic system was designed to meet the needs of growing vegetables in the winter. As long as your home temperature is not less than 60 degrees, small seeds will sprout, grow, and mature as scheduled. With this system, you can have ready-to-eat green and healthy vegetables year round.

Why is the seedling layer prone to algae, how to prevent it?

The three elements that algae needs to grow are air, moisture and sunlight. Algae will be produced as long as the water of the nursery layer receives light. In order to prevent the occurrence of green algae, please use a blackout light cover in any free hole in the nursery layer or the planting layer. In addition it is necessary to clean the machine from time to time to limit the growth of algae.



WARRANTY

Rest assured, our company provides you with high quality warranty service!

1 Year Manufacturer Warranty. The warranty covers all parts but does not include labor or repair costs. Please reach out to the retailer you purchased this unit from for any warranty claims.

Grower's Authority reserves the right to accept or deny any manufacturer warranty claims at their sole discretion for any or no reason. Some examples of denial reasons include improper use such as incorrect power source, water damage, etc.

This product was distributed by Garden Dominion Supply (GDS) located at 18113 Maugans Ave Hagerstown, MD 21740 United States. You can reach us at (240) 347-7072.

Grower's Authority® is a registered trademark of Garden Dominion Supply® (GDS).